

THE LAST WORD

A glimpse into diversity at Washington and Lee University

By KELLY JO LARSEN
STAFF WRITER

Diversity at Washington and Lee. It's become a hot topic of debate in the last few years since the Board took an official "Commitment to Diversity." Though I don't think anyone would argue that we rival the diversity of UC Berkley, by any means, I believe we have more diversity between these old white columns than most people realize. In this column, each week I will sit down with a student who is in a minority at W&L and share with you a little about their lives—who they are and what makes them unique.

Senior Seth Martin is a pre-med Biology major from Bryn Mawr, Pennsylvania. Beyond his role as president of Beta and as a member of the men's tennis team, Seth serves as president of Hillel, the Jewish students' organization on campus.

Hillel is a national organization with over 500 chapters and centers world wide. The official Hillel website (www.hillel.org) says the group seeks to "maximize the number of Jews doing

Jewish with other Jews." The Washington and Lee Hillel seeks to meet this mission by providing not only religious, but social and cultural support for Jewish students.

Worship can be difficult for Jewish students on campus; the nearest synagogue is either in Staunton or Roanoke. Since few college students can be truly expected to make the weekly roadtrips that this would require, Hillel serves as a supplemental religious outlet. The group holds a Shabbat service every month called "First Friday's at Five." Though a rabbi has come to campus in the past, currently two students from the University of Virginia come to lead the service. One of the students brings his guitar with him, allowing him to lead the songs that occur throughout the service.

Since Washington and Lee does not cancel classes for Jewish holidays, Hillel also serves as a way to recognize these celebrations. Most recently, Hillel built a sukkah to celebrate Sukkot, the Jewish harvest celebration. The Judaism follows a separate Jewish calendar, and Hillel also celebrates the

"High Holy Days" of Rosh Hashanah, the Jewish New Year, and Yom Kippur, the Day of Repentance.

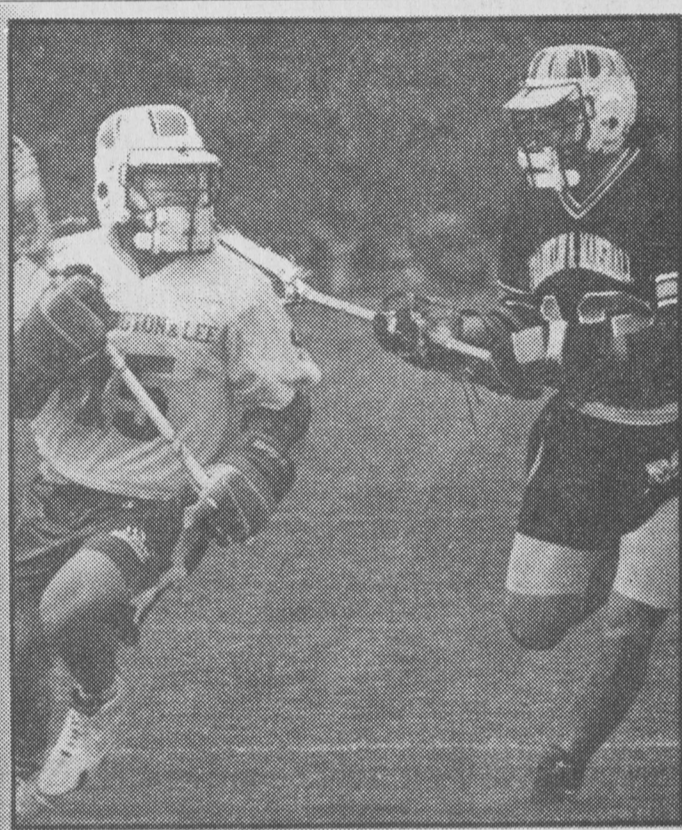
Seth points out that Judaism is as much a culture as it is a religion. Hillel serves many social functions beyond its religious role. Every month Hillel hosts "Very Interesting Professors," where the students meet for an informal dinner at the Sheridan Livery with a Jewish professor for discussion and relaxation. The students also take one trip each year. During Seth's freshman year, Hillel went to the Holocaust Museum in Washington, D.C. Two years ago they went skiing at Snow Shoe, and last year they went to the Homestead. These trips allow for Jewish students to get to know each other better, reflect, and most importantly, relax.

Seth is quick not to take credit for the recent success of Hillel; he attributes the work of Joan Robbins, Director of Hillel, with "getting things up and running [because of her] things have taken off in terms of events and the number of students involved."

Recently Hillel has begun actively recruiting Jewish prospects to campus. Last year they

operated a phoneathon to check in with and answer any questions for prospective Jewish students. Washington and Lee has a long Jewish tradition; at one point there were two Jewish fraternities on campus but the number of Jewish students had dramatically fallen in recent years. Hillel's hard work paid off: there are only six Jewish students in the Class of 2006, but seventeen in the Class of 2007.

While he celebrates the growing number of Jewish students on campus, Seth stresses the need for communication between minority and mainstream students as the real solution to diversity at Washington and Lee. "You can get as many Jewish or minority students as possible but the interaction is key, that in and of itself will increase the numbers [of minorities] and the diversity [of campus]. That's part of the reason all of our events are open to the student body," Seth said. Seth and the members of Hillel invite all of the Washington and Lee community to their events—for more information on any of their activities email hillel@wlu.edu.



Washington and Lee Swing

Come cheer for Washington and Lee,
We're going to win another victory;
The White and Blue we will ever wave in triumph,
For the University. RAH! RAH! RAH!
Fight to the finish we are with you,
Break through the line on every play;
Rush the ball on down the field
and we will win this game today.

When Washington and Lee's men fall in line,
We're going to win again another time;
For W&L I yell, I yell, I yell
And for the University; I yell, like hell
And we will fight! fight! fight! for every yard;
Circle the ends and hit that line right hard!
And we will roll those Wahoos on the sod!
Yes by God! RAH! RAH! RAH!

False Cape, VA proves truly wonderful

By HAYNES KING
TRAVEL EDITOR

I knew I had chosen the perfect place for the Reading Days break when I watched the fire-red sun rise above the ocean while two dolphins jumped out of the glistening water. Although it is about a five hour drive to the coast, I suggest, if you have the time, that you visit False Cape State Park.

On the east coast, False Cape State Park remains one of the few completely untouched and undeveloped coastal areas. The park is landlocked on the North by Back Bay Wildlife Refuge; therefore, to reach the state park, one can hike or bike on the seven mile gravel road through the refuge. If you are up for the walk or ride, it will be well worth your time. Along the way, I saw wild horses, an osprey, a beaver, and a raccoon.

Once arriving at the park, a short mile takes you to the beach side camp sites. A grouping of four sites sits behind the first row of dunes; however, each camp site has a corresponding area on the actual strand to sleep. I stayed two nights in the park; the first night I slept on the

beach while the second night I stayed at the site. The area does have men's and women's pit toilets and potable water close.

On the other side of the park, approximately also a mile walk from the start of False Cape is a completely different camping environment. This area sits on the back of the island on the bay. There is much more shade at this area, but it would be tough to stay barefoot through the trip. I, on the other hand, did not wear shoes from the time I arrived at the camp site until the time that I departed. Each site has a picnic table and post to hang food. With a camping stove, it can be extremely difficult to cook in sand, but if done correctly, one can have a delicious meal. On my menu, we cooked pasta and quesadillas.

To access the park, you have to park in Sandbridge, VA and walk down the road to the entrance to Back Bay Wildlife Refuge Directions are available upon request.

All in all, 5 out of 5 tridents for False Cape

Tapered leg pants vs. collars up

Let me begin by saying that under no circumstance is it ever ok to wear boots with fur on the top; EVER, just don't do it.

With that said, on with the show:

Miriam Webster defines taper as becoming smaller or thinner toward one end; I define taper as the worst thing to happen to pants ever (well, except maybe for stirrups). Pants with tapered legs should be reserved for women over the age of 40 with three or more children.

For those of you who aren't quite sure just what a tapered leg is you should listen up because you're probably the one wearing these atrocities. Tapered legs get slimmer the entire length of the pant to the ankle in a V-like fashion and are flattering to

no figure. These pants are a trademark of all dorks and some who aspire to be cooler than dorks. If you have any hopes of getting anywhere in this world, get rid of these pants.

Their keyhole sized foot holes only serve to make your feet look like flippers. Darkwing Duck you are not, so throw these tight ankle treasures to the trash in exchange for jeans with at least a straight leg, if not a pair with a bit of flare at the end.

Basically if you are a college student and wear tapered pants then you dress like crap and are a loser. STOP NOW and go shopping.

On the other end of the spectrum are the holier than thous who wear their collar up. I'm not going to lie to you, I'm a fan of the collar up. But here is my take on

this simple touch and when it is ok to flip it up.

Never ever wear your collar up on the hill. This look gives you an elitist attitude that just isn't appropriate for class. Additionally: Freshmen Girls-collars down. Wait until winter term, then and only after receiving a sorority bid can you even begin to think about wearing your collar up. And even then it is only appropriate on weekends or when out for the evening.

Collars up are a status symbol and if you have no status, lowly freshmen girls, stop trying to pretend you do.

Basically neither your tapered jeans nor your collar up can make you cool, we all know it's the price tag on your SUV that determines that. But as far as I'm concerned the following list of recent fashion faux pas

just go to further some individuals ability to be sucked in further and further by the great black hole of suck that is their fashion sense

Please remove the following from your things to wear to class wardrobe:

- Extremely short pink pleated skirts. If your thighs are touching below your hemline it's WAY too short.
- Stilettos - Really, please stop.
- Big busted girls in really tight shirts, just gross y'all
- Red suede pumps. As the "Etiquette Grrls" put it ever so cleverly, "red shoes are for children and whores," enough said.

Just look before you leap and remember to check that mirror before heading to class, because I'm watching, I'm *always* watching.

QUICK HITS

Φ Congratulations to Afghanistan for sending their first contestant to the Miss Earth pageant in 30 years.

Φ If you're still wearing a nametag at 35-years-old, you've picked the wrong profession.

Φ If by eligible, you mean toolish...

Φ I mean it, the light in the old SPE house should really be turned off.

Φ More on the old SPE house: The fire alarm went off this week. Did one of the squatters start a fire to keep warm?

Φ Graham-Lees first floor Commons side is jealous of Graham-Lees second floor Commons side.

Φ If you're going use headphones with the volume so loud that the entire room can hear your music, why bother with headphones at all?

Φ Pat and Pierce: Big Four or Bust!

Φ Our resident fashionista should reveal her name so we could all follow her good example. Until we see proof of her style savvy, why should she have the last word on what looks hot?

Φ Who is Jeb Brooks?

Φ Best rivalry: *The Weekly World News* versus *The Trident*

Φ Please, no more puking in the Kappa Sig house.

Φ Freshmen should not vomit in urinals, but should definitely continue to vomit all over the halls of off-campus Kappa houses.

Φ Jeb Brooks has not submitted the Quick Hits referring to Jeb Brooks.

Φ Why was the location of Pretty in Pink, a Kappa, KD, Theta party, behind a Chi-O house?

Φ So, it turns out the Board punted on the calendar decision. Schedule your sit-in for February 5, 6 and 7.

Φ Pretty in Pink had so much potential, but of course there were only two kegs for the entire school. All I'm asking for is a damn srat party that has enough beer, a fun band and nobody bitching about cleaning up the mess. The fraternities do it every weekend.

Φ Cultivate school pride: Learn the words to the Washington and Lee Swing. See above.

Φ The mechanical bull at Chi Psi was awesome. Who knew W&L had so many talented riders?

Φ Watch out with the lights out: There has been a spate of under-the-covers bitings around campus.

Φ Word is there are a lot of twins in the freshman class. How many? Don't know, but no doubt its an even number.

Φ Eden Parks is the only person running in the Senior EC Representative special election who was also a Homecoming nominee.

Φ Keep your parents in line this Friday night. Jeb Brooks will be on a ride-along with the Lexington Police.

Φ Ring-tum Phi, stickeri bum!

Φ Even though the Marlins won, this year's World Series was a total and complete disappointment. Damn the Cubs and the Red Sox!

Φ Granted the srat house driving / parking situation is terrible, but some of the Kappas and KDs headed to 8 and 10 Frank Parsons Way drive way too fast.

Φ Is there anything colored manila besides manila folders?

Φ Yesterday was Priest Appreciation Sunday. What did you do for your priest?

Φ The portrait of John W. Elrod now hanging in the Commons Room of the John W. Elrod University Commons, reportedly cost \$50,000.

Φ Who is your favorite security officer? I like Rex.

Φ Why doesn't anybody dance the minuet anymore?

Φ Kudos to Caroline Crawford and Caroline McKinney for making the College Republicans' Oktoberfest a great time. And thanks to Hobes for hosting.

Φ E-mail your anonymous Quick Hits to phi@wlu.edu.