

PHI EPSILON PI



First Row, left to right: Campbell, Beer, Kocen,

Mrs. W. C. Flournoy, Schlossman, Deitch, Black-
sin.

Second Row: Luria, Dubin, Weiss, Nachman, Bern-
stein, Greenman, Skolnik.

Third Row: Bank, Doerfler, Jacobs, Joffe, Wina-
wer, Storick.

• • • DELTA CHAPTER • • •



OFFICERS

STEVE SCHLOSSMAN President
 MIKE DUBIN Vice-President
 PETER JACOBS Secretary
 MARVIN DOERFLER Treasurer
 HAL BLACKSIN House Manager
 MRS. MARY FLOURNOY House Mother



Delta chapter of Phi Epsilon Pi Fraternity, formed on the Washington and Lee campus in 1920, has always maintained an outstanding scholastic average and has won first place in scholarship more often than any other fraternity.

P. E. P. now owns the newest house at Washington and Lee. The new home at 502 Jackson Avenue, only a few blocks from the campus, boasts fine facilities with room for sixteen men. The final purchase last summer, brought the completion of plans begun several years ago by the PEP's and their advisors—Dave Grossman and Lou Lyons of Lexington and Abe Schewel of Lynchburg.

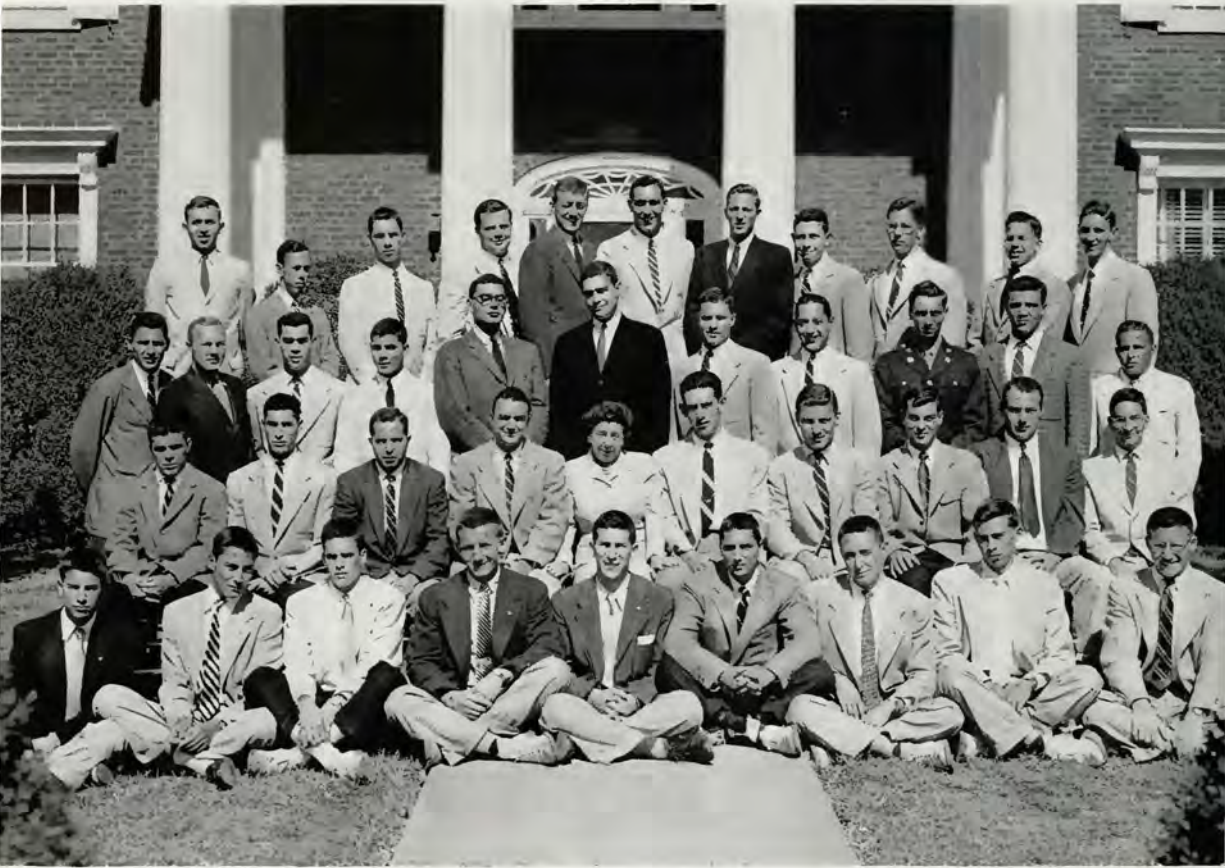
Conspicuous in campus activities during the past year, the Phi Ep's were represented in most every field of stu-

dent life. Steve Schlossman chapter President was co-captain of the General's Baseball team . . . Mike Dubin, a catcher, made a Phi Ep battery with Steve . . . Phil Kocen . . . President of the Graham-Lee Literary Society . . . Andy Greenman . . . News Editor of the Ring-tum Phi, Publicity Director of the Troubs, and Editorial Board of the Shenandoah . . . Pete Jacobs . . . Circulation Manager of the Southern Collegian . . . Barry Storick, Milt Winnawer, and Joe Bernstein . . . Frosh Basketball . . . Dick Skolnik . . . Varsity Basketball. Ronnie Dietch . . . Secretary of Alpha Epsilon Delta . . . Dick Bank . . . Vice-President of Psi Chi . . . to mention only a few.

Mrs. Mary "Mom" Flournoy has served ably as house mother of the chapter for the last fourteen years.



ZETA BETA TAU



First Row, left to right: Levy, Rosenfeld, Isaacs, Abeloff, Portner, Bendheim, Gold, Erdreich, Mintz.

Second Row: Freedman, Schaul, R. Broudy, Jacob, Mrs. Mary Young, Davidson, Blume, P. Maslansky, Rauh, Steiner.

Third Row: Cane, Heymann, Berman, Appelfeld, Giddon, Lipsett, Levitan, Weinstein, Kaplan, Rosenberg, R. F. Broudy.

Fourth Row: S. Maslansky, Halper, Garson, Israel, Cohen, Morgenstern, Montague, Greenbaum, Cristal, Fellingner, Ehudin.

• • • A L P H A E P S I L O N C H A P T E R • • •



OFFICERS

SAM DAVIDSON President
 JOHN BLUME Vice-President
 BOB BROUDY Secretary
 BOB JACOBI House Manager
 MISS MARY YOUNG House Mother



Zeta Beta Tau had its beginning on the Washington and Lee Campus in 1920, as an outgrowth of the Gamma Gamma Club formed in 1919 by six W&L students. Granted a charter by the national fraternity, it became the Alpha Epsilon Chapter.

Since then the chapter has greatly increased in membership and prestige until today it is ranked highly on the campus in all phases of University life.

Again this year thirteen freshmen were pledged, bringing the membership up to forty-four men, all of whom have been active in a wide variety of campus activities. Now, almost every campus activity has at least one ZBT participating in it.

The intramural Football team highlighted the fall season, and came in second in its league in the playoff of a three way time. The playing of Bob Jacobi and coaching of Sid Kaplan and Chuck Rauh were instrumental in this surprising show of power from the ZBTs.

Among the BMOC are Sam Davidson, president of the IFC; Frank Giddon, editor-in-chief of the **Southern Collegian**; Larry Levitan, President of Spring Dances and also business manager of the Troubadors; and Henry Heymann, Vice-President of Fancy Dress and of Spring Dances. Also Paul Maslansky, as a member and co-director of the famed Southern Collegians has brought renown to the house.

Personal honors in the athletic field go to Chuck Rauh, this year named winner of the national fraternity's outstanding athlete award.

The Zebes rank high on the campus scholastically, topping off in a fitting manner another outstanding year for Alpha Epsilon, and making it possible for what has been said in the past to be repeated.

With the passing of each year, Alpha Epsilon feels that the founders of the Gamma Gamma Club can be proud of the name the chapter has made at Washington and Lee.



COTILLION CLUB

OFFICERS

LARRY LEVITAN	Co-President
GEORGE FELLOWS	Co-President
TITO MILLER	Secretary-Treasurer



Beta Theta Pi
Gilbert Dukes
Jim Connor
Scott Laurant
Dick O'Connell
Jim Reeder
Tom Wall

Delta Tau Delta
Watty Bowes
Fred Eastar
Jim Lewis
Jack Peck
Bob Smith
Leo White

Delta Upsilon
Dale Cornelius
Don McKaba
Burke Steele
Tony Valen

Kappa Alpha
Gene Earnhardt
John Lawson
Bill Norman
Harry Sherman
Roy Simkins
Charles Smith
Bob Whitaker

Kappa Sigma
John Bowman
Slade Carter
Ellis Draw
Charles Humpton
Frank Hundly
Jason Sowell

Lambda Chi Alpha
Mike Davis
Bill Grigg
Sedge Moss
Bob Stivers

Phi Delta Theta
Bob Fishburn
Harry Ford
Peck Garlington
Bill Luckett
Milam Turner
Dave Simpson

Phi Epsilon Pi
Steve Schlossman

Phi Gamma Delta
Marv Bishop
Bill Rider
Duane St. John
Wiley Wright

Phi Kappa Psi
George Greer
Garry Martin
Art McCain
Joe Pontius
Buck Pratt
Gordon Taylor

Phi Kappa Sigma
Chris Alexander
Bill Branscome

Sid Negus
John Schenkel
Henry Walker

Pi Kappa Alpha
Joe Crute
John Freeman
John Leo
Dave Linn
Slator Miller
Chuck Watson

Pi Kappa Phi
John Jennings
Ed Kloman
Nick Simons
Charles Slick
Jack Stackhouse
Beverly Stephenson
Harry Stine

Sigma Alpha Epsilon
Jap Becker
Pat Brock
Dick Busch
Bill Houston
John Howard
Marvin Meadors

Sigma Chi
Bud Barryman
Forney Daugette
George Milligan
Jim Parryman
Monte Pearso
Bob Wallace

Sigma Nu
Ben Benjamin
Hal Hamilton
Jay Jackson
Doug Menrob
Carl Swanson
Steve Thomas
Fred Welber

Zeta Beta Tau
Sam Davidson
Henry Haymann
Sid Kaplan
Larry Levitan
Bernie Stainer